



# HK-RDM

## HK De-Burr Machine



# HK-RDM HK De-Burr Machine



## Operation Done Using the Touch Panel!

Choosing the best processing pattern is automated for any material type and form.



## Thickness and Form

Machining is possible up to .8 – 39 inches of width and up to 2.75 inches in thickness. Height and speed are adjustable.

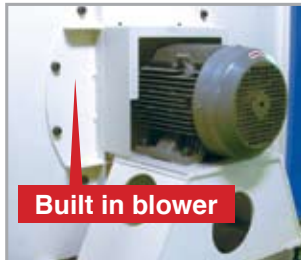


## Safety & Work Environment Dust Collector

HK Metal-Este dust collector provides a clean work environment. No protection goggles are necessary while deburring machine is in operation.

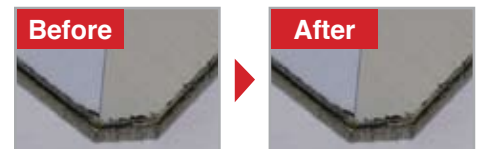
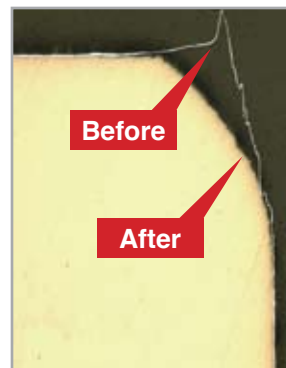
## Built-in Vacuum Blower

Stabilizes work piece while in operation and requires less space. Due to separating the vacuum blower and dust collector, the power is guaranteed to be stable.



## Examples

\*Image of cross section by microscope.



Stainless with vinyl protection



Punching form

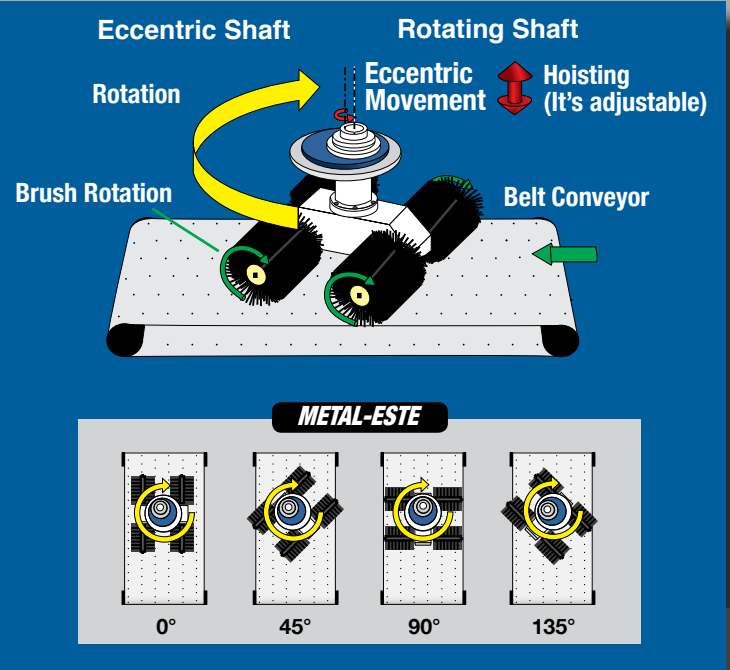
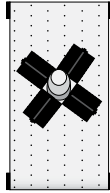
- One of the world's leading suppliers of high quality laser application systems.
- 370,000 sq. ft. campus with 250,000 sq. ft. production & training plants.
- More than 2000 laser systems produced in the 25 years since 1990.
- Just opened the State of the art addition of plant #2 (130,000 sq. ft.) completed in March of 2015.
- Produced 14 laser systems per month in 2014.
- Production capacity up to 400 units/year from 2015.
- Publicly traded in Korean Nasdaq Market (KOSDAQ).

## Innovative Technology for Deburring

The combination of rotation and eccentric motion allows the polishing brush to deburr the work piece from any direction. There is no need for a second finish. Unlike previous iterations, the brush shaft does not cross at a right angle with the rotating shaft, allowing the polishing brushes to reach the work piece from multiple directions.

### Previous Machine

Brush and rotating shaft were fixed at a right angle, limiting the deburring range.



## Cost Reduction while Improving Efficiency

Reduce operating time up to 1/20. Drastically improve efficiency compared to hand labor.



## Stabilize Quality

Finishing quality can vary between workers. The HK Metal-Este deburring machine guarantees a high quality finish every time.



## Control

Economical with basic functions.



## Side Stands

Use at both entrance and exit for longer work pieces.



## Polishing Brushes

4 brushes comes with the standard model or get 6 brushes to accelerate productivity.



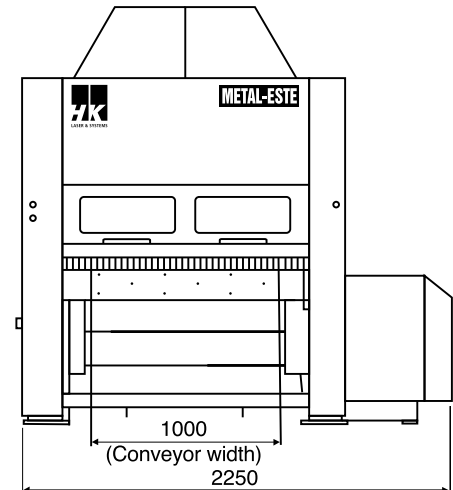
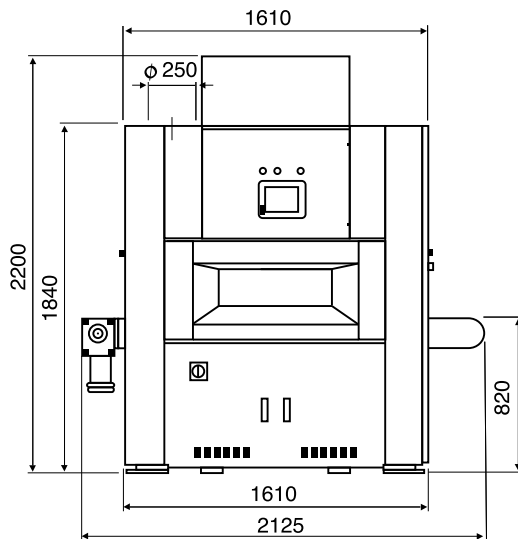
## Additional Options

**Automatic start point setting system**

**Bar code reading function**

Change to optional mode by entering bar code

**Signal Tower**



### Specifications

Model Name	HK-RDM-39
Maximum Width Of Work Piece	39 Inches
Maximum Thickness Of Work Piece	2.75 Inches
External Dimensions	83.7 X 89.9 X 86.6 Inches
Weight	4078 Lbs.
Conveyor Speed	0~4m/min.
Electric Power	17.9kW



**HK America, Inc.**

1120 N. Garfield St., Lombard, IL 60148

Office: (630) 916-0200

sales@hk-global.com • www.hk-us.com

Distributor